

Plate Tectonics

Picture Vocabulary

Continental Drift



PERMIAN
225 million years ago



TRIASSIC
200 million years



JURASSIC
150 million years ago



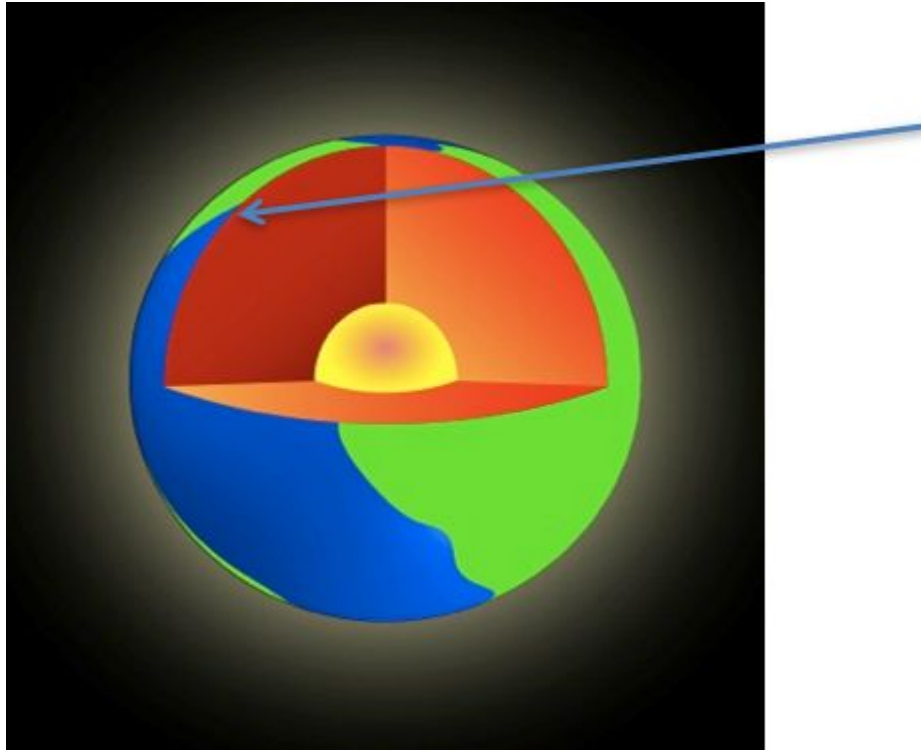
CRETACEOUS
65 million years



PRESENT DAY

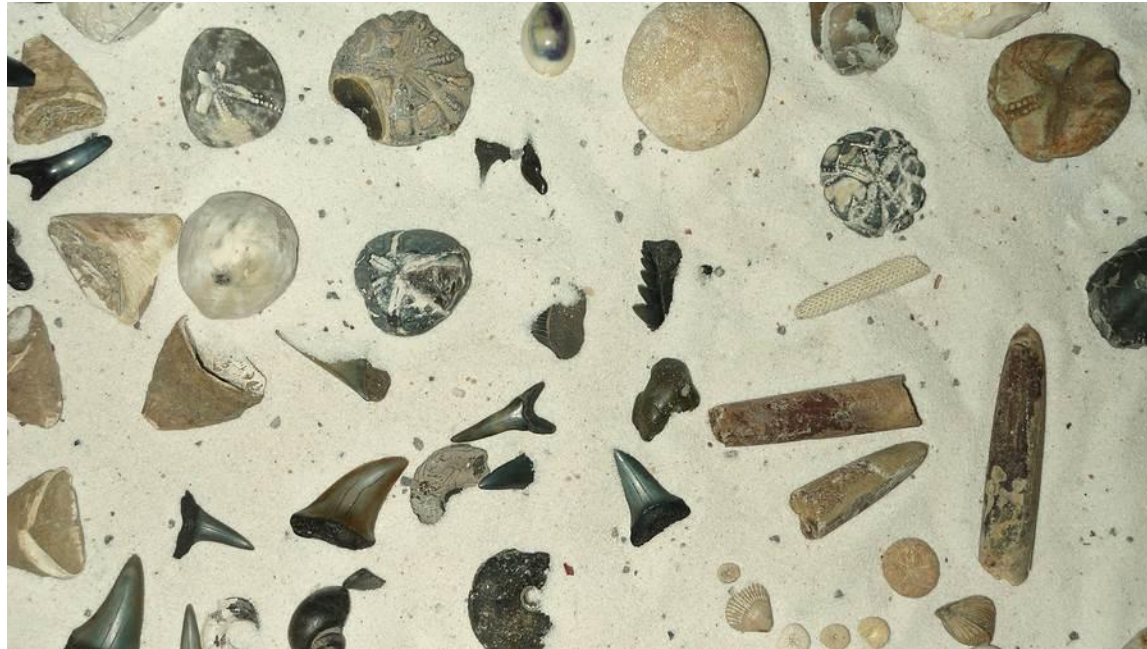
The theory that continents were once connected but have drifted apart

Crust



The thin, solid, outermost layer of Earth; made of less dense silicates and is either continental (landmasses) or oceanic (ocean floors)

Fossils



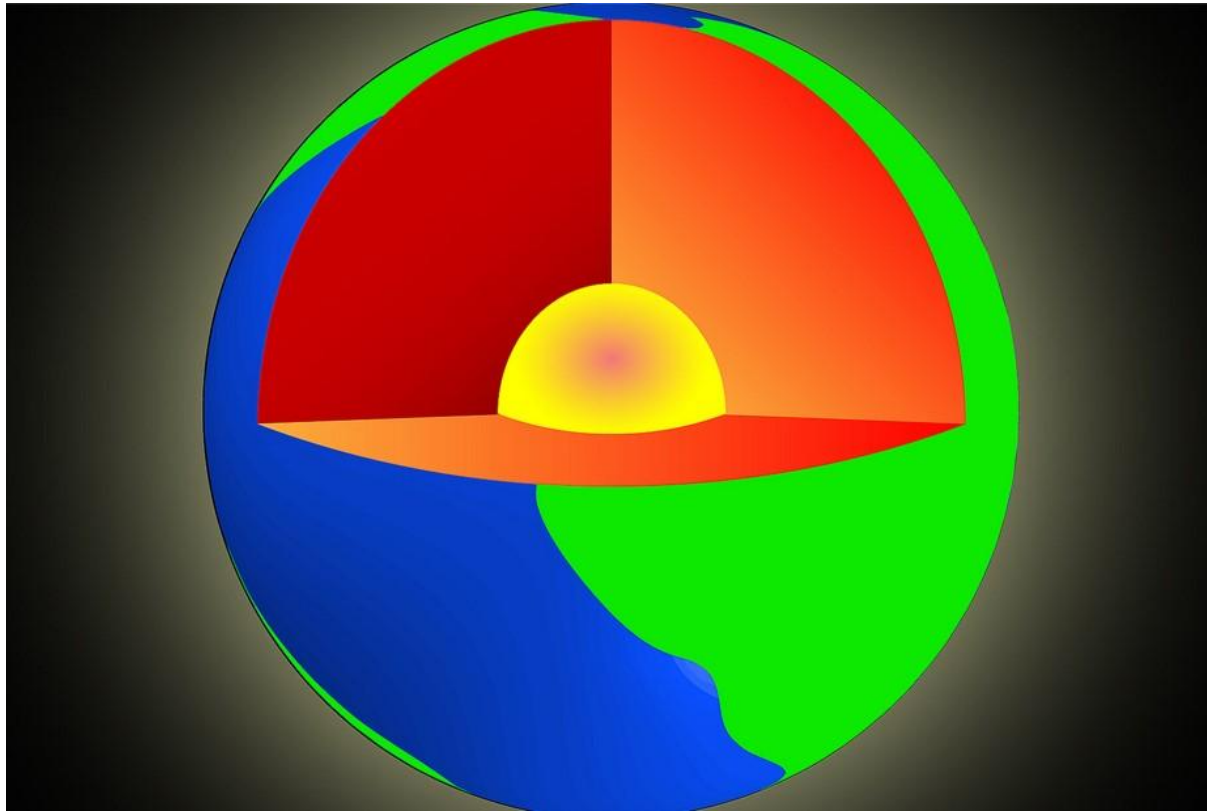
The mineralized remains of organisms that show how long-dead organisms lived and how their bodies were structured

Index Fossils



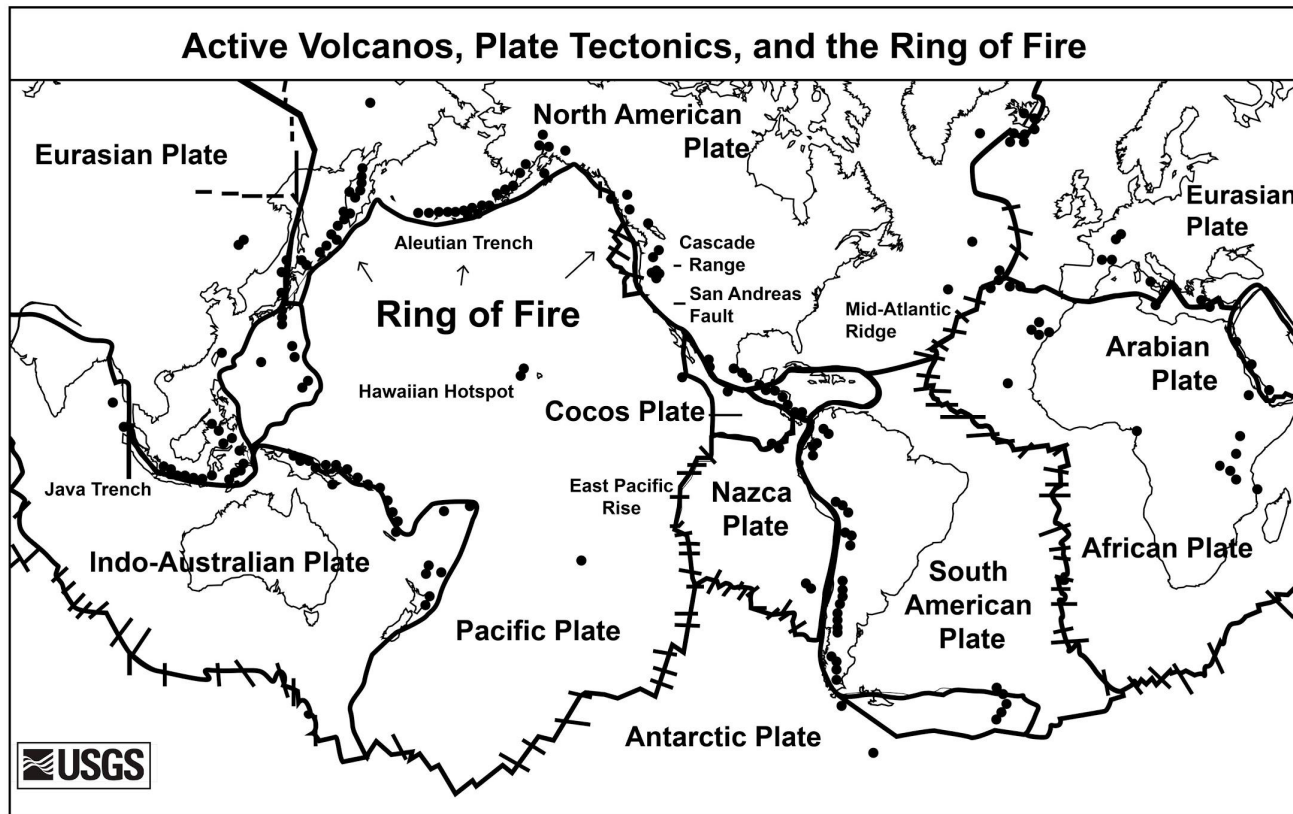
A fossil that is widespread, has lived over a relatively short period of time, and can be used to correlate rock strata

Mantle



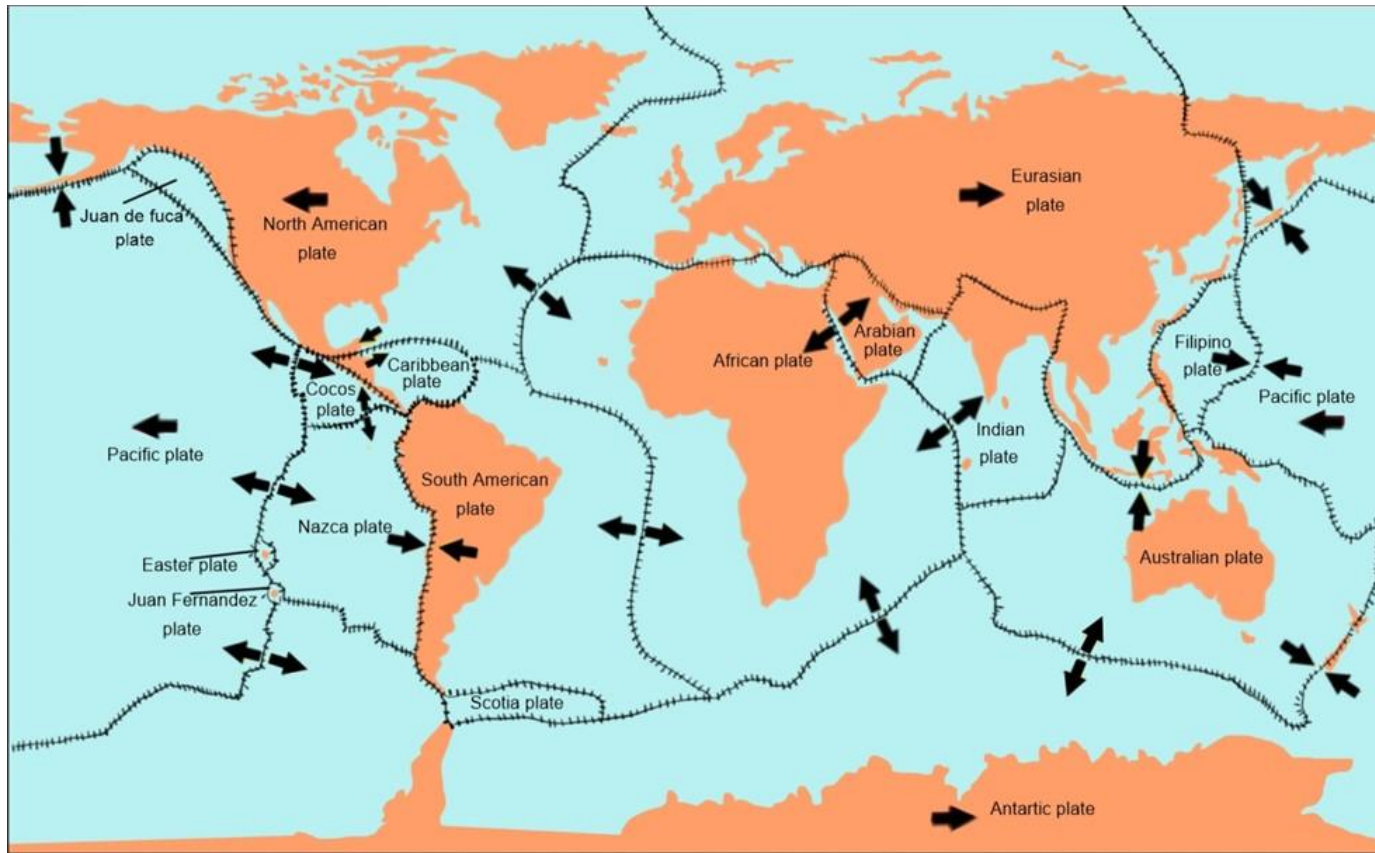
The solid layer of Earth between the crust and the core; made of dense silicates

Plate Tectonics



Theory that the crust is divided into large pieces called tectonic plates that slowly move on top of the mantle

Tectonic Plate



Huge pieces of crust that slowly move on the upper ductile part of the mantle